

# eGlideGoodies

*Functional Products for Harley-Davidson Electra Glides*

## Ultra Brace™ (model TB-3) Installation Instructions

Congratulations on the purchase of your Ultra Brace™ for Tour-Paks. This product will increase the ease of use and functionality of your Harley-Davidson Tour-Pak. The installation is straightforward and easy. If you have any questions email [support@eglidegoodies.com](mailto:support@eglidegoodies.com).

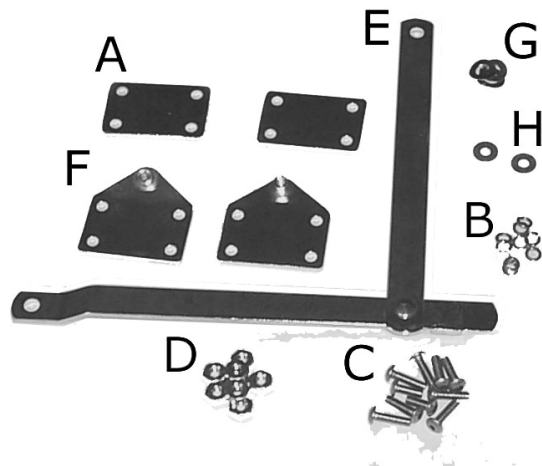
### Notes for reference:

- '79 – '88 → early model year Tour-Pak
- '89 – '96 → mid model year Tour-Pak
- '97 – '05 → late model year Tour-Pak
- '06 – Current → latest model year ABS Tour-Pak

### Inventory kit:

The Ultra Brace kit includes the following:

- A. back plates (2)
- B. lock washers (10)
- C. machine screws (10)
- D. hex nuts (8)
- E. brace mechanism (1)
- F. brackets (2)
- G. wave washers (4)
- H. flat washers (2)
- I. hex wrench (1)



### Seat-back cushion:

For mid, late and latest model year Tour-Paks, remove the passenger seat-back cushion from Tour-Pak lid and Tour-Pak body. For early model year Tour-Paks, remove the passenger seat-back from the seat. Proceed to step 1 for the appropriate model year of your tour-pak.

**Model year '06 to current Tour-paks:****Install Tour-Pak body bracket and back plate:**

1. Using one of the back plates as a template, position the plate on the outside of the Tour-Pak body, the side facing the front of the motorcycle. Position this back plate like the existing stock cable body bracket but located on the other side of the inset area...the area closer to the hinges of the tour-pak. Locate it  $\frac{3}{4}$  " below the top edge of the Tour-Pak body with the lid open. See illustration below. (For Tour-Paks outfitted with the automatic lid light, position this back plate an additional  $\frac{1}{2}$ " towards the back of the Tour-Pak (where the lid hinges are), to allow the Tour-Pak to open a little more).



2. Using a  $\frac{5}{32}$ " drill bit, steady the plate with one hand and carefully drill 1 hole. Install one  $\frac{1}{2}$ " machine screw and nut and tighten slightly to stabilize the plate's location. Drill a 2<sup>nd</sup> hole and install a 2<sup>nd</sup> screw and nut. Complete drilling the remaining two holes. Remove plate, screws and nuts.
3. If your Tour-Pak is equipped with a liner, use shears, snips or a pair of diagonal cutters to cut a square notch the size of the bracket from the liner around the location of the drilled holes.
4. Position bracket with smaller angle ( $5^{\circ}$ ) of bend, on the inside of Tour-Pak body with pem-nut towards the tour-pak top. Attach bracket and back plate using 4 longer  $\frac{1}{2}$ " machine screws, 4 lock washers and 4 nuts. Tighten the screws.

Note: For a nice "factory installed" look, use aluminum pop rivets instead of the supplied machine screws. ACE Hardware

2014108, 5/32" diameter, grip range 3/16" – 1/4" (medium length) work well.

**Install Tour-Pak lid bracket and back plate:**

5. Position the 2<sup>nd</sup> back plate on the outside of the closed Tour-Pak lid by locating it just above the tour-pak body back plate and 1/8" above the radius of the lip.



6. Drill 4 holes using the procedure in step 4.
7. Position bracket with larger angle (20°) of bend, on the inside of the lid with the pem-nut towards the tour-pak bottom. Position the back plate on the outside of the lid. Line up the 4 holes and attach both bracket and back plate using 4 longer 1/2" machine screws, 4 lock washers and 4 nuts. Tighten the screws. Skip to step number 8.

Note: For a nice factory install look, instead attach the bracket and back plate using aluminum pop rivets. ACE Hardware 2014108, 5/32" diameter, grip range 3/16" – 1/4" (medium length) work well.

## **Model year '05 and earlier Tour-paks:**

### **Install Tour-Pak lid bracket and back plate:**

Note: Very early model year Tour-Paks may already have a similar bracket so steps 1-3 may be skipped.

1. Using one of the back plates as a template, position the plate on the outside of the Tour-Pak lid by locating it in the center of the raised area (the raised area is on the front side of the lid and faces the front of the motorcycle). See top plate location in illustration below:



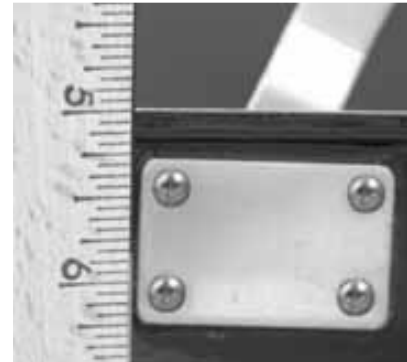
2. Using a 5/32" drill bit, steady the plate with one hand and carefully drill 1 hole. Install one machine screw and nut and tighten slightly to stabilize the plate's location. Drill a 2<sup>nd</sup> hole and install a 2<sup>nd</sup> screw and nut. Complete drilling the remaining two holes. Remove plate, screws and nuts.
3. Position bracket on the inside of the lid with the pem-nut towards the bottom. Position the back plate on the outside of the lid. Line up the 4 holes and attach both bracket and back plate using 4 machine screws, 4 lock washers and 4 nuts. Tighten the screws.

Note: For a nice factory install look, instead attach the bracket and back plate using aluminum pop rivets. ACE Hardware 2014108, 5/32" diameter, grip range 3/16" – 1/4" (medium length) work well.

**Install Tour-Pak body bracket and back plate:**

Note: Model year '79 – '88 Tour-Paks may already have a similar bracket so steps 4-7 may be skipped

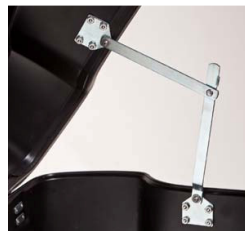
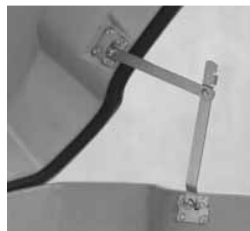
4. Position the 2<sup>nd</sup> back plate on the outside of the Tour-Pak body, the side facing the front of the motorcycle. Position the body back plate directly beneath the lid back plate with the lid closed. Locate it 7/8" below the top edge of the Tour-Pak body with the lid open. See illustration to the right. (For Tour-Paks outfitted with the automatic lid light, position this 2<sup>nd</sup> back plate an additional 1/2" towards the back of the Tour-Pak (where the lid hinges are), to allow the Tour-Pak to open a little more).
5. Drill 4 holes using the procedure in step 4.
6. If your Tour-Pak is equipped with a liner, use shears, snips or a pair of diagonal cutters to cut a square notch the size of the bracket from the liner around the location of the drilled holes.
7. Position bracket on the inside of Tour-Pak body with pem-nut towards the top. Attach bracket and back plate using 4 machine screws, 4 lock washers and 4 nuts. Tighten the screws.



Note: For a nice "factory installed" look, use aluminum pop rivets instead of the supplied machine screws. ACE Hardware 2014108, 5/32" diameter, grip range 3/16" – 1/4" (medium length) work well.

### Install Tour-Pak Brace mechanism:

8. The brace mechanism has two arms. The bottom arm has a tab and a bend. The top arm is straight. Attach top arm to the lid bracket using 1 shorter machine screw, 1 lock washer, 1 flat washer and 2 wave washers per the illustration to the right. (Position the brace so that its pivot point bends up and to the brake lever side of the motorcycle when the lid closes.)
9. Attach bottom arm in the same manner. (If your Tour-Pak is fitted with a liner the brace will fold on the side of the liner where you gear is stowed.) Note that the two brace arms may not make an exact 90 degree angle with the pem-nut...this is normal. Now check and tighten all screws.
10. Re-install passenger seat-back cushion
11. Remove old Tour-Pak cable by unscrewing the cable's attachment screws. Discard cable and screws.
12. Check opening and closing your Tour-Pak lid. Enjoy the added functionality and ease of use in future rides around town or on tour.



We welcome your feedback! Please email your comments about this product or installation to [support@eglidegoodies.com](mailto:support@eglidegoodies.com).

Harley-Davidson and Tour-Pak are registered trademarks of Harley-Davidson, Inc. eGlideGoodies has no affiliation with Harley-Davidson, Inc. The use of these terms is for identification purposes only.