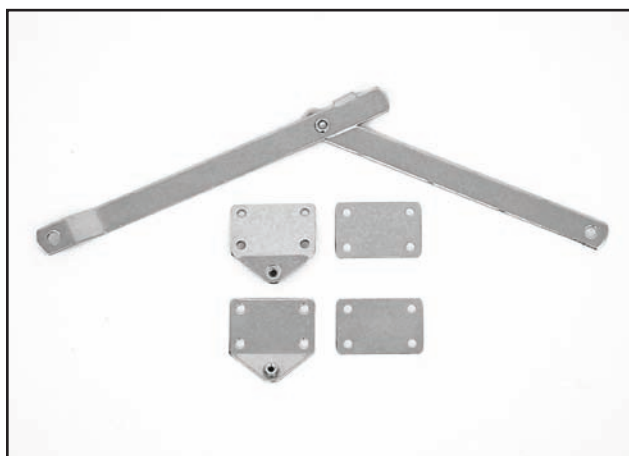


eGLIDEGOODIES

ULTRA BRACE

Story by Nate (Mo) Kersjes – Photos by Jesse B. Nelson

The Ultra Brace™ for Harley-Davidson® Tour-Paks provides a functional upgrade for your Electra Glide, Tour Glide, Road Glide or Road King. The brace replaces the stock cable or accessory tether that goes between the Tour-Pak lid and body. It allows the lid to open fully but not flop over. Once you've installed an Ultra Brace, you'll never want to go back to the cable or tether. The Tour-Pak is much easier to open and close with an Ultra Brace installed. Lock it into place, or for quick entry, leave the Ultra Brace in the unlocked position. Never again will the cable get caught outside the Tour-Pak. The Ultra Brace is easy to install and includes all hardware and instructions. After installation, the passenger backrest covers all exterior bracket back plates. It fits all '79 to current Tour-Paks, including detachable and chopped Tour-Paks.



eGlideGoodies' Ultra Brace



Here is a 2010 Tour-Pak with the stock tether.



1 Loosen the lower passenger backrest mounting hardware.



2 Remove the lower passenger backrest.



3 Place the backing plate on the opposite side of the stock tether bracket, 3/4" from the top of the Tour-Pak's bottom half.



4 Mark the location of the first hole in the backing plate.



5 Drill the marked hole in the Tour-Pak.



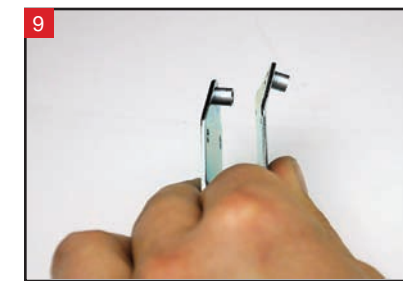
6 Place the backing plate up to the Tour-Pak and install a bolt through the first hole.



7 Use the mounting plate as a drill guide for the rest of the holes.



8 Remove the bolts holding the backing plate in position.



9 Here is the difference between the two mounting brackets.



10 Install the backing plate and 5° mounting bracket.



11 Install the mounting bolts and lock washers.



12 Install the nuts onto the mounting bolts.



eGLIDEGOODIES

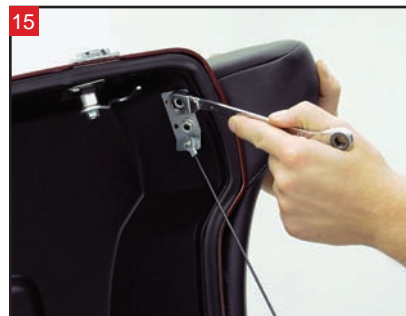
ULTRA BRACE



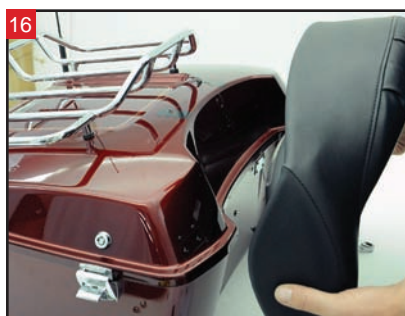
Tighten the mounting hardware.



Remove the left-side upper passenger backrest mounting hardware.



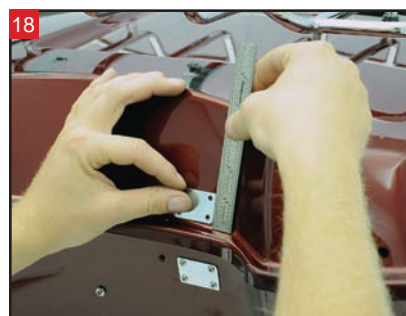
Remove the right-side upper passenger backrest mounting hardware.



Remove the upper passenger backrest.



Position the upper backing plate directly above the lower.



Place the mounting bracket 1/8" above the radius of the lid.



Drill the first hole for the upper mount.



Install one of the mounting bolts.



Measure the mounting bracket to make sure it's level.



Drill the rest of the holes using the backing plate as a guide.



Install the bracket (with the 20° bend) along with the mounting bolts and lock washers.



Install the nuts on the bolts.



Tighten the mounting hardware.



Install one of the wave washers onto the post.



Install the brace arm onto the 5° bracket.



Install a lock washer, regular washer, and wave washer on the brace bolt.



Install the brace bolt through the brace, and into the mounting bracket.

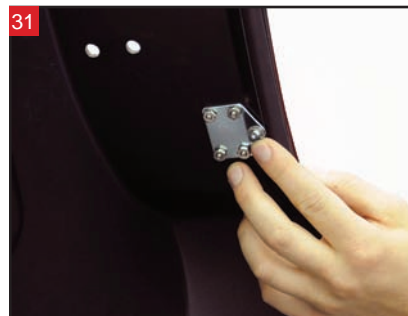


Tighten the brace mounting hardware.



eGLIDEGOODIES

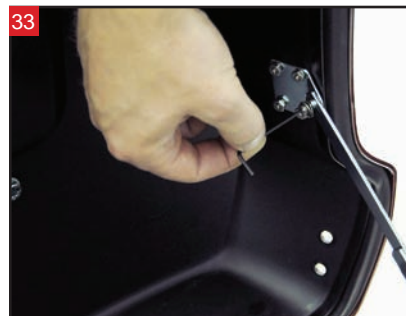
ULTRA BRACE



31 Install a wave washer onto the 20° bracket.



32 Install the mounting bolt (with the three washers) into the bracket.



33 Tighten the mounting hardware.



34 Use a pick to push out the lock pins in the stock tether mount.



35 With the pins pushed out, remove the retainers.



36 Remove the upper stock mounting bracket.



37 Unscrew the stock lower mounting bracket and remove the tether.



38 Install the upper passenger backrest.



39 Install the backrest mounting hardware.



40 Tighten the backrest mounting hardware.



41 Install the lower backrest pad and mounting hardware.



42 Tighten the lower backrest mounting hardware.



AFTER

eGlideGoodies
Ultra Brace
Part #TB-3

www.eglidegoodies.com

Here is the Tour-Pak with the new Ultra Brace, in the fully opened and locked position.